

Quantitative evaluation of regional precipitation forecasts using multi-dimensional remote sensing observations (QUEST)

Susanne Crewell, Institute for Geophysics and Meteorology, University of Cologne (IGMK)

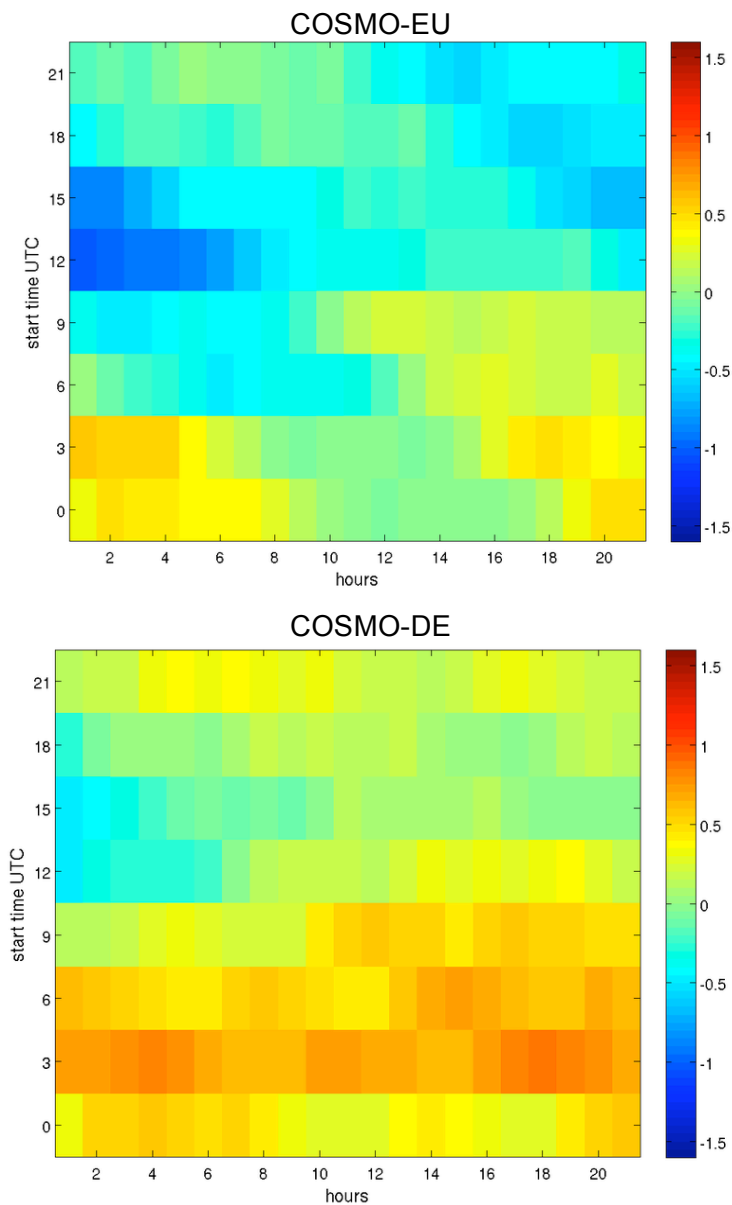
Felix Ament, MeteoSwiss / University of Hamburg (UHH)

George Craig, Martin Hagen, Institute of Atmospheric Physics (DLR)

Jürgen Fischer, Institute for Space Sciences, Free University of Berlin (FUB)

Axel Seifert, Deutscher Wetterdienst (DWD)

Nicole van Lipzig, Catholic University Leuven, Belgium (KUL)



An illustration of the long-term model evaluation: Bias (model - observation) in integrated water vapour (IWV) [kg m⁻²] for both COSMO-EU and COSMO-DE as a function of forecast time (x-axis) and model start time (y-axis) for the time period between 4 April and 31 August 2007. Therefore diagonals correspond to the same time of day. No major model changes have been implemented during this time frame. Observed values were derived from GPS measurements.