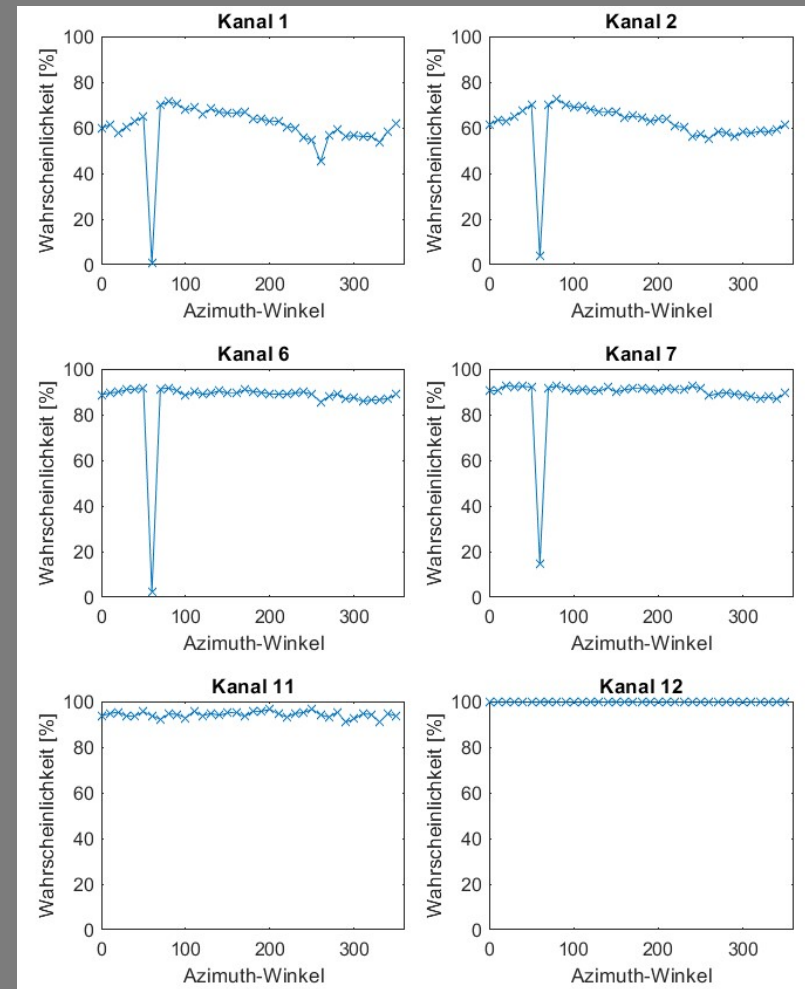
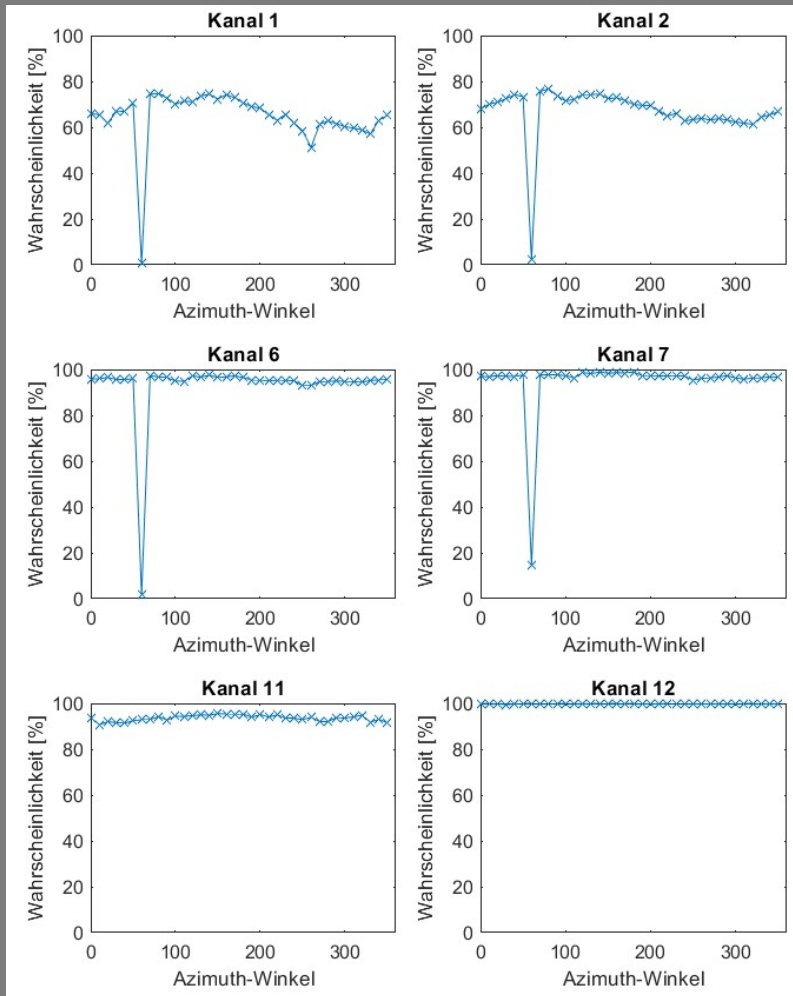


## Hatpro scans

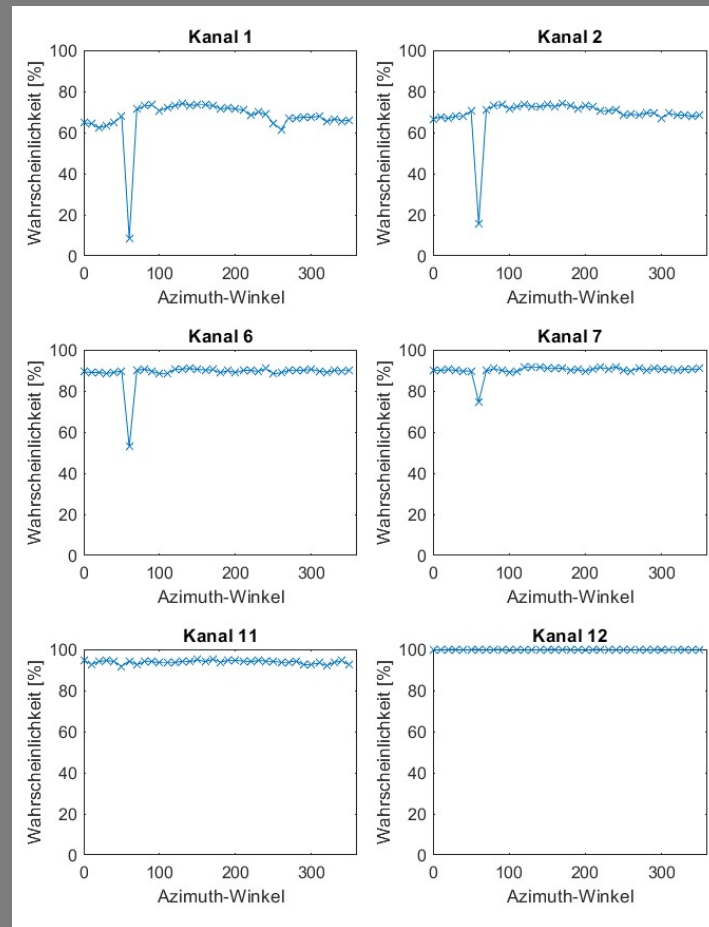
- Searching for disturbances in tophat scan (30° elevation angle)
- New Code is faster and shorter
- Different way of filtering for clearsky
  - Checking if the mean (LWP) of the 120-second intervall before and after the scan is below 10 g/m<sup>2</sup>
- Calculating  $measurement(azi) - min(scan)$  for each azimuth of each channel
- In what percentage of cases is the difference less than 1K?

# New Code – Comparison Clearsky vs. Non-Clearsky Data

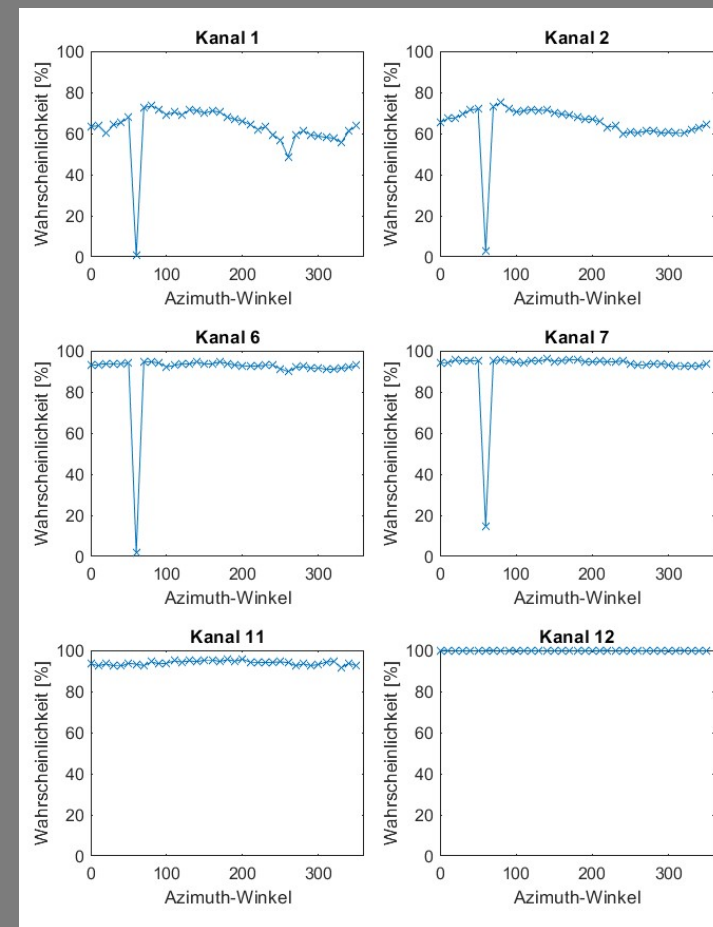


# Comparison with vs. Without Mira36

14.04. – 18.05.2021

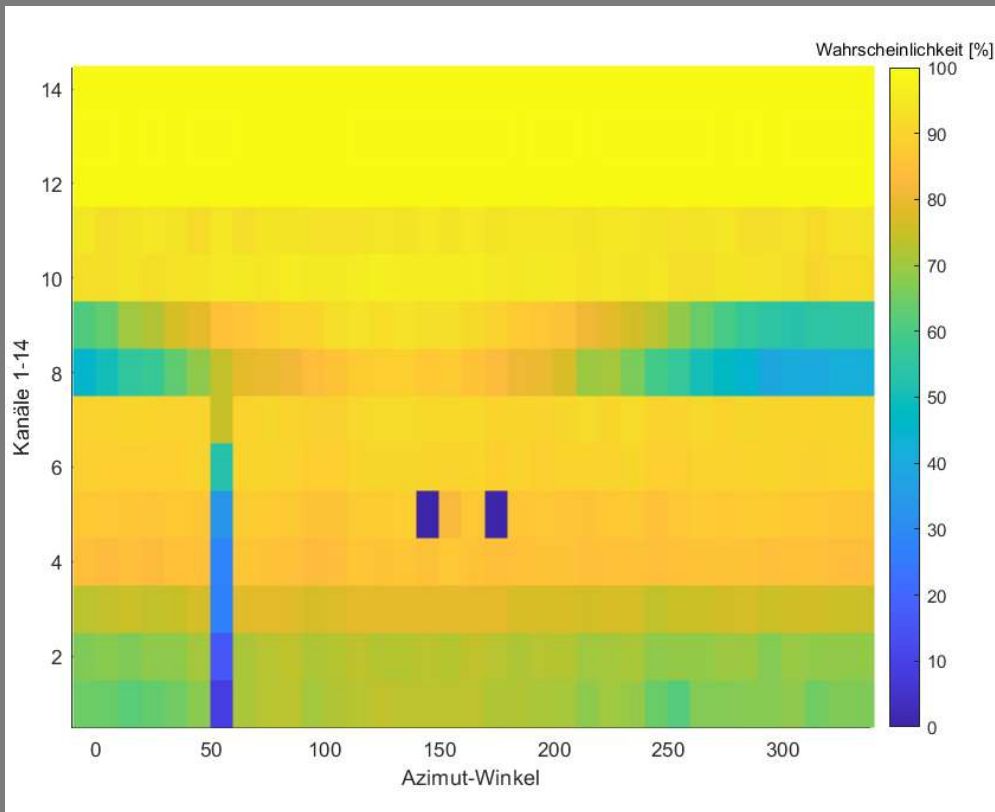


14.04. – 18.05.2020

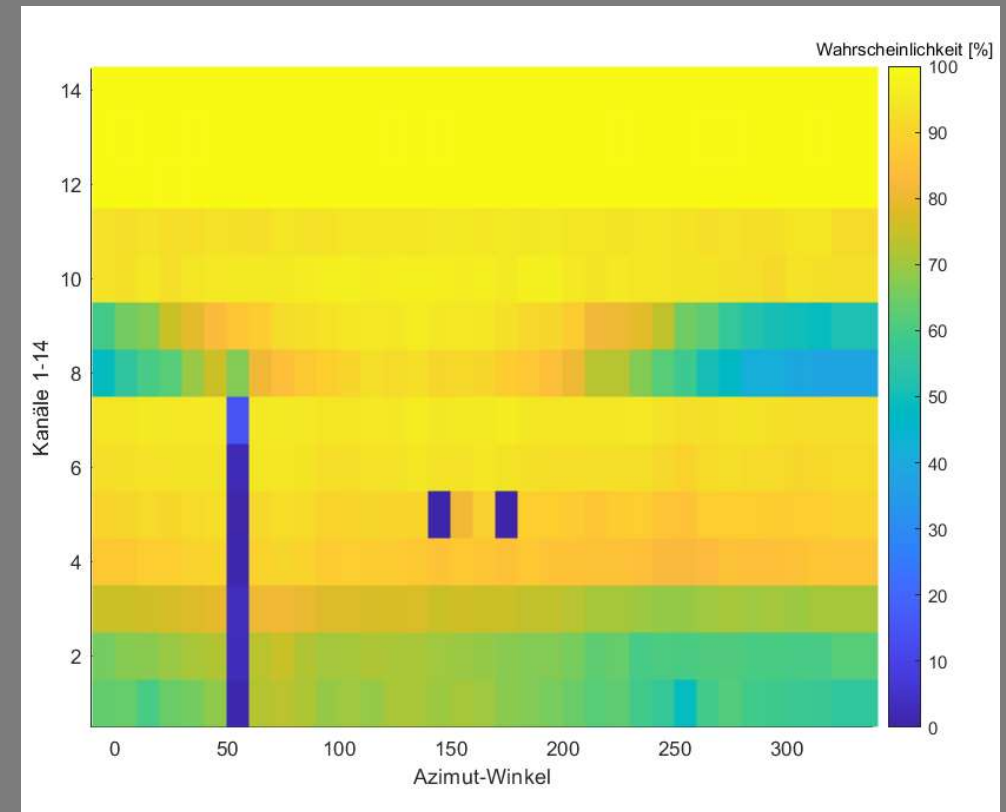


# Comparison with vs. without Mira36

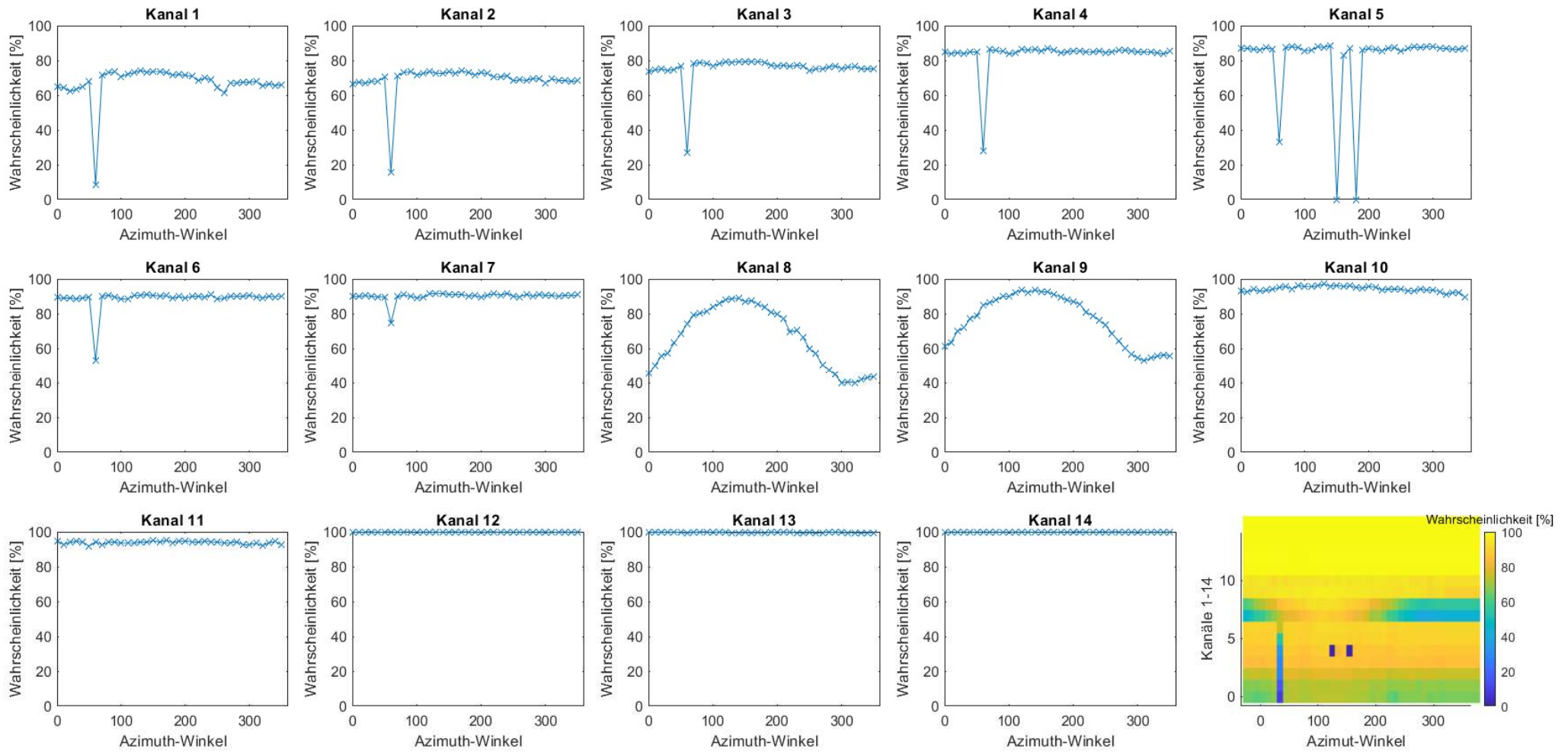
14.04. – 18.05.2021



14.04. – 18.05.2020



(mit Mira36) 14.04. – 18.05.2020



# (ohne Mira36) 14.04. – 18.05.2020

